

Beautiful KITCHENS & Baths™

Enduring Style

Create a Look That Lasts

*Perfect Pantries:
Make the Most
of Your Space*

Designer Tips for
a Blissful Bath



\$9.99

Summer 2013
Display until July 22

BHG.com/KitchenBath

Soothing Harmony

Inspired by stays at five-star resorts, a well-traveled couple give their master bath a spa-like makeover.

BY AMBER DAWN BARZ | PHOTOS WERNER STRAUBE
FIELD EDITOR MEGAN CHAFFIN

The overflow-style tub offers a place to relax and let the worries of the day wash away. Floor-to-ceiling windows capture a garden view and ample sunlight.







Opposite: Espresso-stained cabinetry and thick white marble countertops add contemporary flair to the custom dual vanities. One vanity includes a shaving mirror and a spot for a TV. **Right:** Undermount sinks pair with sleek, widespread faucets for a clean-lined look.



When one member of a couple works long nights and the other works long days, any time spent together feels like a holiday. And for this master bath's hardworking owners—a doctor and a news anchor—synced vacation time is used for intercontinental travel whenever possible. The couple's visits to resorts in Malta, France, and Italy inspired the transformation of their dated 20-year-old bath into an at-home escape.

The bath's amenities read like those found in a five-star retreat: a soothing color palette; a soaking tub; and a multihead shower that relaxes tight muscles like a practiced masseuse.

"On some days, time grooming in the bath is about all the time my clients have together," designer Gail Drury says. "So we wanted to make shared time in this space as comfortable and appealing as possible. Separate vanities allow togetherness without having to worry about whether you are in one another's way."

By design, the tub and shower are both spacious enough for two. "The water feature of the overflow-style tub encourages relaxation," Drury says. Overflow tubs are designed to be filled almost to the top; the water appears to be spilling over the edge, but in reality it's directed back into the tub, creating a gentle waterfall effect.

The challenge of the new tub was to make it appear freestanding yet offer the convenience of a tub deck for placing soaps, shampoos, or a glass of wine. "Prior to the remodel, the tub deck was massive and made the bath feel cramped and dated," Drury says. "To create a more modern aesthetic, we built a freestanding surround to fit a drop-in tub and topped the surround with marble."

To make the bath feel more luxurious and spacious, glass partitions stand where there once were solid walls. Clear tempered glass was used in the shower; etched tempered glass encloses the toilet compartment for additional privacy.

The roomy shower features massaging body jets, overhead rain-style showerheads, and two wall-mount showerheads, one fitted with a handheld spray. A marble mosaic mural turns one of the shower's granite-covered walls into a focal point. "We chose granite because it stands up to water and bath soaps better than marble," Drury says.

Custom, espresso-stained cherry cabinets create eye-catching contrast against the mostly white marble surfaces. "The result is a treat for the eyes and a retreat for the senses," Drury says. "The owners don't have to travel beyond their master bathroom door to enjoy a little time relaxing."

RESOURCES BEGIN ON PAGE 122.





DESIGNER INSIGHTS

Grooming Centers

Precision-planned amenities transform a vanity into an ideal spot for styling hair and applying makeup.

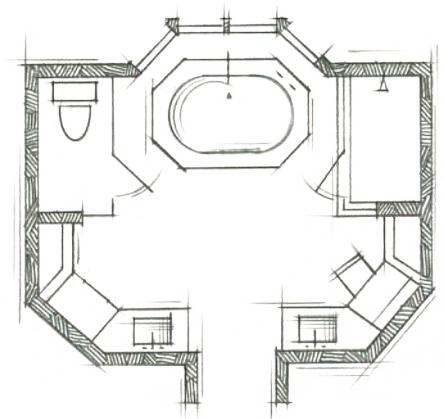
- **Closeup view.** A lighted, telescoping mirror offers a magnified view of the user's face to ensure perfect makeup application.

- **From all angles.** A mirror installed inside a cabinet door to the left of the grooming center (it looks like a stack of drawers but is actually a hinged-door cabinet) provides a perfect view of the back of the user's hair.

- **Plugged-in appliances.** The same cabinet offers a trio of electrical outlets so a hair dryer, curling iron, and straightener are available for use at any time.

- **Compartmentalized storage.** Custom-size cubbies inside nearby drawers and cabinets neatly organize small items.

- **Perfect-size stool.** When not in use, the ergonomically designed stool tucks beneath the vanity countertop.



Left: Located adjacent to the shower, one vanity is fitted with storage for towels, toiletries, and small appliances. A lower section of countertop provides a comfortable spot for grooming.